

1

## Power Your Gateway

Plug your Gateway into a power outlet with the provided power cord and wait until the LED on the Gateway turns **RED**.



For further assistance, please  
visit [Tenovi.com/support](https://tenovi.com/support).

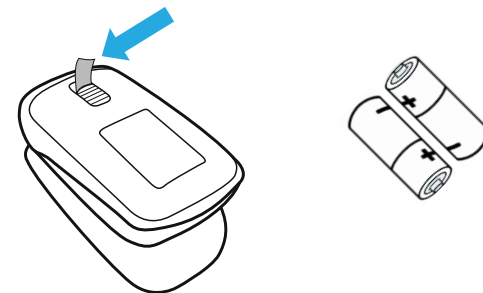
tenovi

© 2025 Tenovi Co.  
All rights reserved. Republication, duplication or modification  
in whole or in part is prohibited without prior written permission  
from Tenovi. All trademarks are owned by or licensed to  
Tenovi, Co. unless otherwise noted.  
Revision 05.01.2024

2

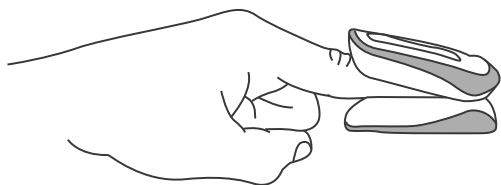
## Remove Pull Tab

Remove pull tab from the battery  
compartment to power on the device.



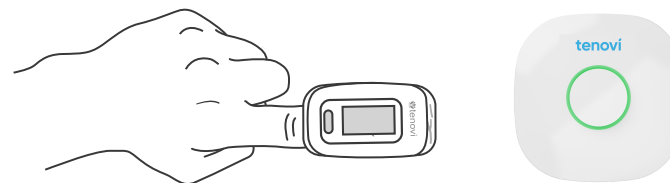
### 3 Insert Finger Into Pulse Ox

Insert **one finger** completely into the measurement section of the Oximeter with your **finger nail pointing up** towards the screen.



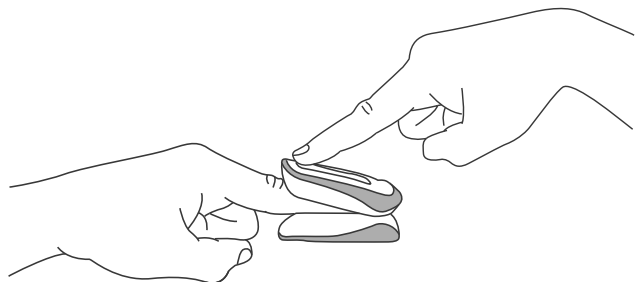
### 5 Wait 20 seconds

Keep your finger in the oximeter for **20 seconds** or until you hear a beep from the Tenovi Gateway. Then, **remove your finger** and wait for Tenovi Gateway to turn **GREEN**.



### 4 Press Power On Pulse OX

Stand within **20 feet** of the Tenovi Gateway and **press the power button** on the oximeter.



### 6 Daily Measurements

**Take one measurement** each day unless advised otherwise by your healthcare provider. The LED will turn **RED** each morning and then turn **GREEN** once a measurement has been successfully transmitted.



Measurement Needed



Measurement Successful