

For further assistance on how to
use your Tenovi device,
please contact a Tenovi representative
at:

Phone: (714) 418-5658

**Email:
support@tenovi.com**

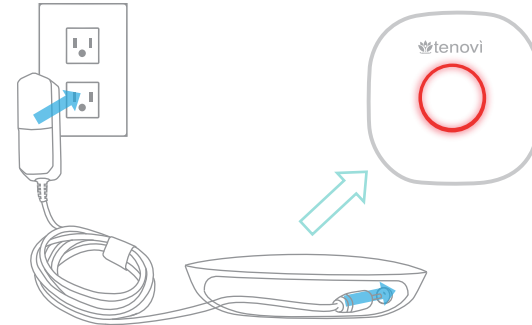


© 2023 Tenovi Co.

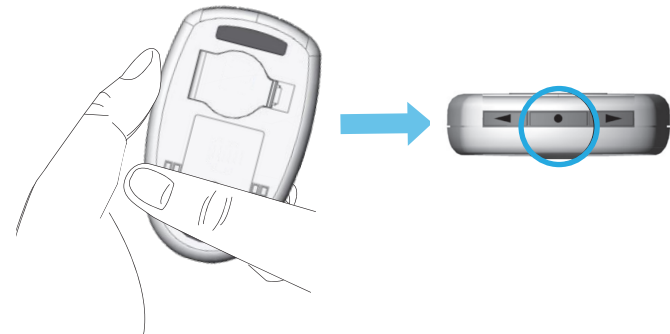
All rights reserved. Reproduction, duplication or modification
in whole or in part is prohibited without prior written permission
from Tenovi. All trademarks are owned by or licensed to
Tenovi, Co. unless otherwise noted.

Revision 03.21.23

- 1** Plug your gateway into a power outlet with the provided power cord and wait until the LED on the gateway turns red.

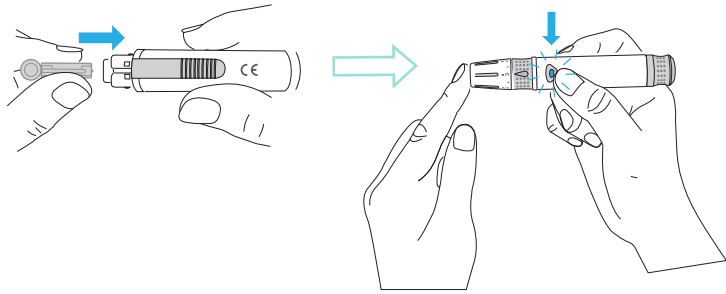


- 2** Insert the battery into the back of the glucometer. Stand within 10 feet of the gateway and press the top button on the glucometer. The gateway will beep indicating that it has connected successfully to the glucometer.



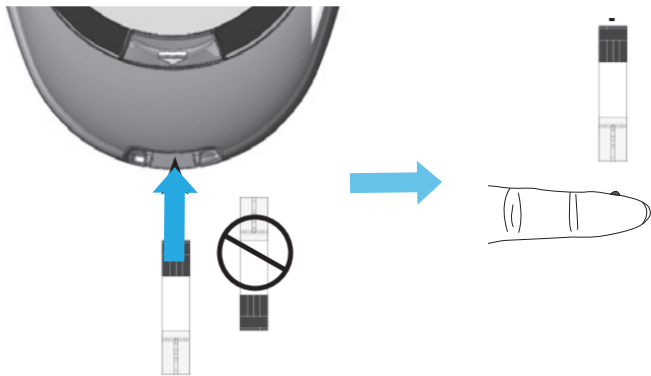
3

Insert a new disposable lancet firmly into the lancet holder and take a blood sample



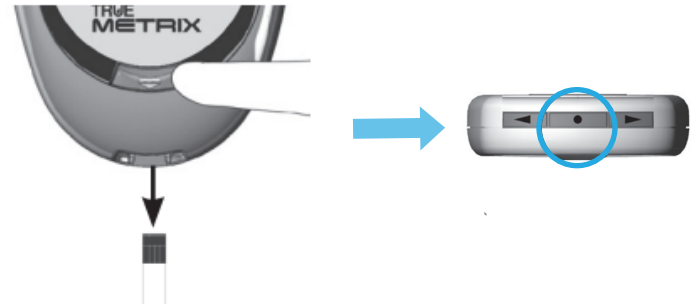
4

Insert a test strip with the contact bars facing upwards into the meter's test strip port. Apply the blood sample to the end of the test strip. When the measurement concludes, the results are shown on the display.



5

Remove the test strip and the screen will turn off. **Stand within 10 feet of the gateway and press the power button on top of the glucometer to transmit the reading to the gateway.** You can take readings while away from the gateway. Press this button the next time you are close to your gateway to transmit all of your readings.



6

If the LED ring is **Green**, you have properly taken a measurement and that measurement has been successfully transmitted to your healthcare provider. Take one measurement once per day unless otherwise advised by your healthcare provider. The LED on your Tenovi Gateway will turn **Red** at the beginning of each day indicating you must take a measurement for that day.



Measurement Needed



Measurement Successful